

## 3. Installing the Eudora CE Tables

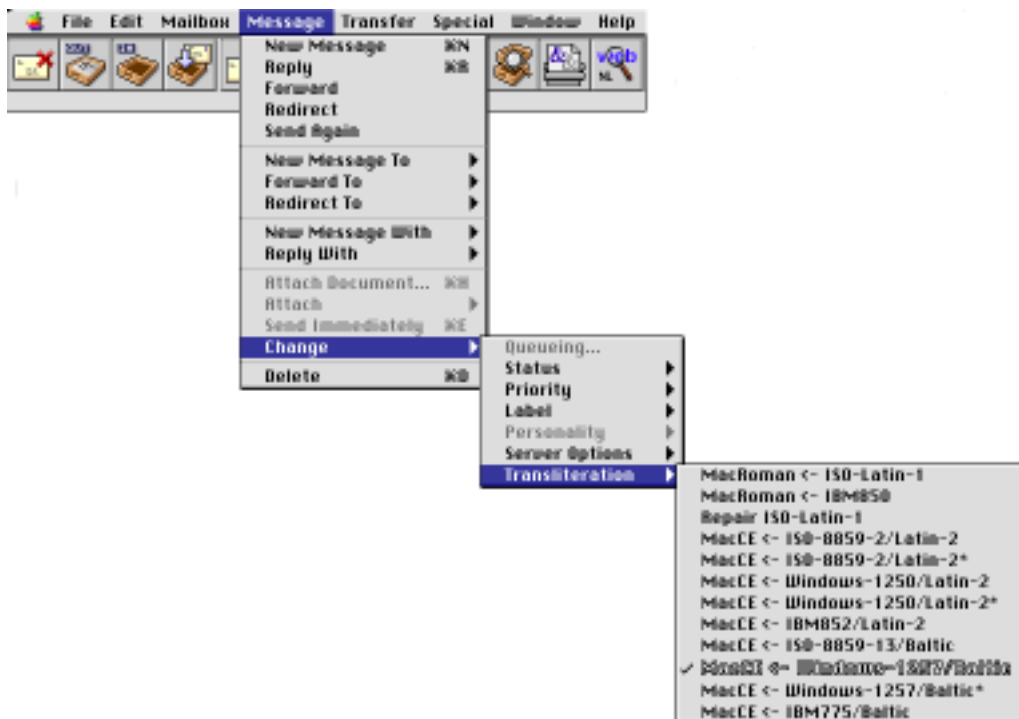
Qualcomm Eudora 4.x, 5.x

Mac OS 8.x  
Mac OS 9.x



Eudora CE Tables will enable you to send and read e-mail containing special letters from the Croatian, Czech, Estonian, Finnish, German, Hungarian, Latvian, Lithuanian, Polish, Slovak, Slovenian and Sorbian languages. For the Baltic languages you will also require at least one Apple CE font, (eg. Times CE, Helvetica CE) installed on your Macintosh system. Such fonts are included as part of the [Baltic Utilities](#) software package.

1. Place both files **Eudora Standard Tables** and **Eudora CE Tables** into the Eudora Stuff folder inside the Eudora Application folder.



2. A new **Transliteration** sub-menu (Message | Change | Transliteration) will appear listing all of the available conversions. Those for incoming mail are written with <- and those for outgoing mail with ->.
3. Choose either **MacCE <-> ISO-8859-13/Baltic** or **MacCE <-> Windows-1257/Baltic** for the Baltic languages.
4. Define the conversions that you use most often (separately for incoming and outgoing mail) as default. To do so, hold down the shift key while you select it from the menu, once when a received message is open and once when an outgoing message is open. The default conversion is then outlined.